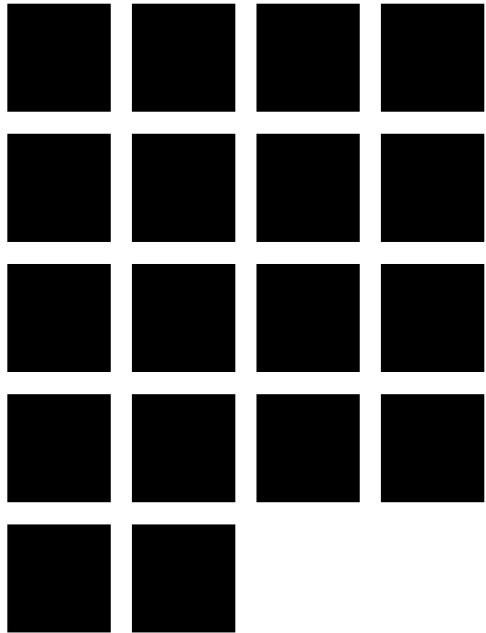




Citizens' Guide to Transportation Planning

**Genesee County
Metropolitan Planning Commission**



The Genesee County Metropolitan Planning Commission (GCMPC) originated in 1963. The Planning Commission Board consists of eleven members appointed to three year terms by the Chairperson of the Genesee County Board of Commissioners.

**Genesee County
Board of Commissioners**

Richard E. Hammel
Chairperson
Fred Shaltz
Vice-Chairperson
Archie H. Bailey
Rose Bogardus
Floyd Clack
Miles T. Gadola
Ted Hammon
John Northrup
Raynetta P. Speed

**Genesee County Metropolitan
Planning Commission Board**

Alan Himelhoch
Chairperson
Donald Becker
Vice-Chairperson
Elizabeth A. Taylor
Secretary
Archie H. Bailey
Floyd Clack
Miles T. Gadola
Alexander H. Isaac
Gloria J. Nealy
Robert W. Ranger, Jr.
Gayle I. Reed
Ron Winters
Chapin W. Cook, AICP
Director-Coordinator
Thomas G. Goergen
Assistant Director

GENESEE COUNTY METROPOLITAN PLANNING COMMISSION STAFF

Chapin W. Cook, AICP, Director-Coordinator
Thomas Goergen, Assistant Director
Julie Hinterman, Principal Planner
Flint Nesmith, Principal Planner
Derek Bradshaw, Senior Planner
Chris Kiesling, Senior Planner
Shelia Auten, Associate Planner
Stanley Brantley, Associate Planner
Brandon Dunn, Associate Planner
Sharon Gregory, Associate Planner
Sheila Long, Associate Planner
Jason Nordberg, Associate Planner
Carl Thompson, Associate Planner
Kim Grover, Rehabilitation Intake Coordinator
George MacEachern, Rehabilitation Inspector
Susan Schantz, Accountant
Makeda Myles, Accountant
Christine Pobocik, GIS Technician
Lynn Randall, Office Manager
Debra Brady, Secretary
Beth Carmack, Secretary
Mecca Sadler, Secretary

CITIZENS' GUIDE

To Transportation Planning in Genesee County

This guide provides a broad description of transportation planning and decision making processes in Genesee County, Michigan. It is our goal to provide information to you, the public, and encourage you to participate in transportation planning activities that ultimately affect each of us daily. **You can make a difference!**



Genesee County Metropolitan Planning Commission
1101 Beach Street, Room 223
Flint, MI 48502-1470

Telephone: 810-257-3010 Fax: 810-257-3185

E-mail: gcmnpc@co.genesee.mi.us

Website: <http://www.gcmnpc.org>

Our Mission

*To provide a framework and encourage development that
enhances the quality of life in Genesee County
through Government and Community Partnerships.*

“An Equal Opportunity Organization”

Preparation of this document has been financed through the United States Department of Transportation — Federal Highway Administration and Federal Transit Administration, the Michigan Department of Transportation and Genesee County under provisions of the Federal Transportation Efficiency Act for the 21st Century - “TEA-21”

“WHAT is the CITIZENS’ GUIDE?”

The primary purpose of this booklet is to familiarize readers with transportation planning for Genesee County, the **Genesee County Metropolitan Alliance**, and explain how decisions on public transportation projects and issues are made. This guide will explain how to become involved in the planning process, how you can participate and “have a say”. As transportation planning has a “language of its own”, a Glossary has been provided to help you “learn the lingo”.

Is it worth the effort to be involved?

YES!

Whether motivated by individual reasons; a wish to have a road improved; the need to use public transit services; or to find the location of area bicycle paths and trails, Genesee County citizens are becoming more involved in transportation planning activities.

Are there benefits to public participation? Only by being involved is it possible to make a difference. After all, most people would like to have a say as to how the millions of public dollars \$\$\$! are spent each year on Genesee County ‘s extensive network of roads, expressways, bridges, public transit system, bicycle and pedestrian routes. Your ideas are welcome and needed!

Our Transportation Network: It's More than Roads!

Roads:

- In 2000, there were over 2,618 total miles of roads in Genesee County eligible for Federal and State of Michigan funds. Two main Federal Interstate Highways (I-75 and I-69) dissect Genesee County. US Highway 23 connects Genesee County with the Ann Arbor area. I-475 provides a loop through the City of Flint. On any given day, over 280,000 vehicles travel on these roads alone.
- Over 20,000 commercial freight trucks travel on I-75 and I-69 daily; carrying over 11 million tons of goods each year!

Rail:

- Genesee County has 89 miles of railroad tracks!
- Four railroad companies provide freight services in and out of Genesee County, shipping over 2 million tons of goods each year. CN North America/Grand Trunk Western, CSX and Central Michigan Rail Companies operate through Genesee County.
- AMTRAK carries over 21,300 passengers annually over the CN North America rail line in Genesee County.

Transit:

- The Flint Mass Transportation Authority (MTA) provides public transportation services to residents of Genesee County. The MTA provides over 6.8 million trips to their customers annually.

Air:

- Bishop International Airport is one of the fastest growing airports in the U.S. Over 640,000 passengers are served and more than 41 million pounds of cargo are shipped each year.

Recreation:

- Over 30 miles of area trails currently offer a choice for non-motorized travel, primarily for bicyclists and pedestrians.

Genesee County Metropolitan Planning Commission (GCMPC)

“What We Do and Why?”

- GCMPC provides a forum through the Technical Advisory Committee (TAC) and the Genesee County Metropolitan Alliance, where planning partners meet and discuss transportation projects and issues.
- GCMPC Plans! - The key to all transportation projects and system wide improvements is the **Flint-Genesee County “Long Range Transportation Plan (LRP)**. GCMPC’s Transportation Planners prepare, administer and periodically update the LRP for Genesee County. The LRP contains transportation goals that the planning partners agree to.
- Every two years, GCMPC staff produces a five year list of projects called the **Transportation Improvement Program or “TIP”**. Projects listed in the TIP are drawn from the LRP based on priorities and need. Both the LRP and the TIP are financially responsible documents. That means that there must be enough money to reasonably assure that projects will happen.
- GCMPC staff is available and welcomes the opportunity to speak to community based groups, local governments and citizens about transportation. **Please Invite Us!**

MAPS, DOCUMENTS and INFORMATION AVAILABLE AT GCMPC

- Street and Road Maps
- Traffic Flow Maps
- Aerial Photographs: For the years 1966, 1972, 1977, 1982, 1987, 1992, 1997, 2002
- Topographic Maps
- Flint-Genesee County 2025 Long Range Transportation Plan
- Transportation Improvement Program
- Unified Work Program
- GCMPC Public Involvement Plan
- Genesee County 2000 Census Tract Maps
- Political Districts and Precincts Maps
- U.S. Bureau of the Census data
- 1980—Current Genesee County Building Activity Report



Planning Partners:

Transportation planning in any metropolitan area is a complex process. In Genesee County the process involves many agencies at the local, State and Federal levels, as well as the citizens of Genesee County.

Representatives of each of these partners are members of the Genesee County Metropolitan Alliance and the Technical Advisory Committee.

Planning Partners include:

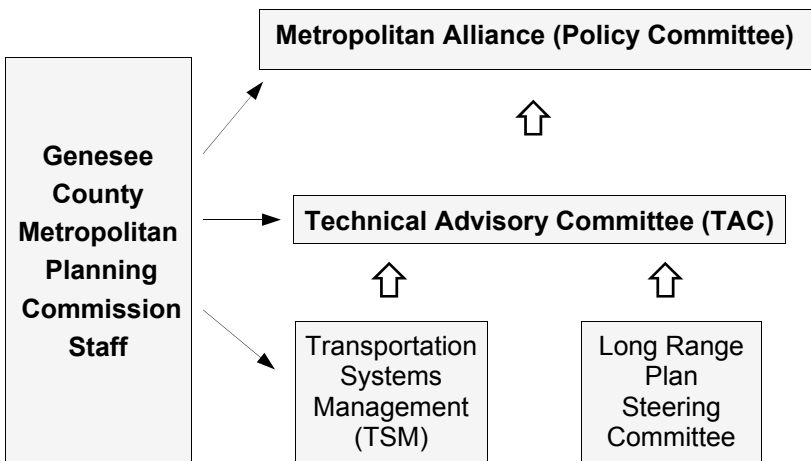
- **Federal Highway Administration (FHWA)** whose responsibilities focus on roads classified as eligible for federal aid.
- **Federal Transit Administration (FTA)** whose responsibilities are placed on public transit projects and issues.
- **Michigan Department of Transportation (MDOT)** is responsible for over 9,700 miles of roads in the State Trunkline System and Federal Expressways. MDOT is also the agency through which Federal revenues are “assigned” (allocated) to Genesee County.
- **Genesee County Road Commission (GCRC)** is responsible for maintaining over 1,800 miles of roads and numerous intersections in Genesee County. With few exceptions, these roads are predominantly those located in Townships, outside of City or Village limits. In addition, the GCRC is responsible for maintaining some stretches of State “owned” roads and rest areas. GCRC works with GCMPC in the LRP and TIP processes to make improvements to streets eligible for federal funds.
- **Genesee County Cities and Villages** are responsible for maintaining the local streets within their limits. Those that have streets eligible for federal funds work with GCMPC in the TIP and LRP processes to make improvements to those streets.
- **Genesee County Townships** work with the Genesee County Road Commission on transportation projects eligible for Federal funding.
- **Mass Transportation Authority (MTA)** is the major provider of public mass transit services to citizens of Genesee County. The MTA works with the GCMPC during the LRP and TIP processes.
- **Citizens of Genesee County** provide valuable information and input to the development of transportation projects in Genesee County. Each Planning Partner welcomes the public’s input during each phase of the planning process.

“What is the Genesee County Metropolitan Alliance?”

Federal Transportation laws require that a Metropolitan Planning Organization (MPO) be designated for each urbanized, metropolitan area of the United States. Because of our population, Genesee County is considered an urbanized area. The Genesee County Metropolitan Alliance (or “Metro” as it is known) has been the designated MPO since 1973.

The primary responsibility of the “Metro” is to review and oversee Genesee County transportation projects and the processes that make them happen. “Metro” members include Genesee County citizens, elected officials and Transportation agencies. Each local unit of government has two members—an elected official and a citizen representative. “Metro” members also include the Genesee County Board of Commissioners, the GCMPC, the Genesee County Road Commission, the Drain Commissioner, the Mass Transportation Authority (MTA), the Michigan Department of Transportation (MDOT) and the Michigan Department of Environmental Quality (MDEQ).

Since 1963, the Genesee County Metropolitan Planning Commission (GCMPC) has provided staff and technical resources to the MPO. Many of the day to day operations and work activities of Federal, State and local transportation programs are administered by the GCMPC.



GENESEE COUNTY METROPOLITAN ALLIANCE

Patricia Conley, Chairperson
Robert Johnson, Vice-Chairperson
Linda Barber, Treasurer

Trustees

Robert Cole	Marian Michalik	Virginia Spencer
James Cowen	John Rauch	William Thewalt

Members

Argentine Township	City of Flushing	Montrose Township
Atlas Township	Flushing Township	City of Mt. Morris
City of Burton	Forest Township	Mt. Morris Township
Clayton Township	Village of Gaines	Mundy Township
City of Clio	Gaines Township	Village of Otisville
City of Davison	Genesee Township	Village of Otter Lake
Davison Township	Village of Goodrich	Richfield Township
City of Fenton	City of Grand Blanc	City of Swartz Creek
Fenton Township	Grand Blanc Township	Thetford Township
City of Flint	City of Linden	Vienna Township
Flint Township	City of Montrose	

Genesee County Board of Commissioners
Genesee County Drain Commissioner
Genesee County Road Commission
Genesee County Metropolitan Planning Commission
Michigan Department of Transportation
Mass Transportation Authority
Michigan Department of Natural Resources
Federal Highway Administration
Federal Transit Administration



2025 Flint-Genesee County Long Range Transportation Plan “LRP”

The LRP is a document that is reviewed and updated every five years in Genesee County. This process considers our current transportation system, identifies its needs (deficiencies), and makes recommendations for preservation and expansion projects that will improve the system.

What Happens During the Update Process?

- The current LRP is assessed.
- Demographic changes are updated.
- Public Meetings are Held.
- Current and future needs are discussed.
- Goals are developed.
- Federal, State, Local planning partners and the public provide ideas.
- Projects, policies and new initiatives are proposed.
- Financial limitations are identified.

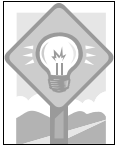
Seven goals were developed through the 2025 LRP's Public Involvement process. They are:

- ***Accessibility*** - Provide a planning process and transportation system that is integrated and accessible for all persons.
- ***Efficiency*** - Provide an efficient system that promotes effective management and operation.
- ***Safety*** - Ensure a safe transportation system
- ***Economic and Financial Considerations*** - Provide an economical and financially sound transportation system.
- ***Environmental Protection*** - Maintain and improve quality of the environment and minimize adverse effects to the public.
- ***Land Use*** - Promote desirable land uses and desirable land use locations.
- ***Community Character*** - Protect sociological and cultural values of communities in transportation project areas.

A “Draft” Long Range Plan is Produced!

The “Draft” LRP is taken to the Public for their ideas.

- Public notices are published.
- A 45-day Public Comment Period is provided.
- Workshops and Forums are held at various locations where citizens can provide input on the LRP and other transportation issues.
- Public comments are included in the “Draft” LRP.



The “Draft” LRP is evaluated to make sure it considers each of the goals developed through the Public process as well as how it addresses:

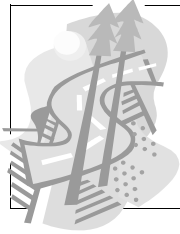
- Air Quality
- Environmental Justice
- Finances
- Public Involvement
- Federal Planning Requirements



Throughout development of the LRP, recommendations are made for projects designed to preserve and maintain the existing system as well as expansions necessary to meet the demands of a growing population. Individually and collectively, projects must be financially responsible regarding the amount of revenues expected to be available. At the **Genesee County Technical Advisory Committee (TAC) and Metropolitan Alliance**, the planning partners meet to discuss and vote their approval of the “Draft” LRP.



**A New 25-Year
Genesee County
Long Range Plan!!**



The Flint-Genesee County Transportation Improvement Program “TIP”

The TIP is the implementation tool through which goals identified in the Long Range Plan are “put into action” throughout Genesee County.

Every two years GCMPC announces a “Call For Projects”. Notice is sent to each of the local transportation agencies and published in local newspapers. Projects are submitted by the agencies.

Staff reviews, evaluates and prioritizes each project application based on standardized criteria such as:

- Does the project affect the Air Quality of Genesee County?
- Are there any persons or group of persons who may be disproportionately affected by the project? (Environmental Justice)
- Is there enough money for this project? (Financial Responsibility)
- Which of our LRP goals does this project help us meet?

Staff compiles the proposed list of projects into a “Draft” TIP.

Genesee County Transportation Committees Review and Adopt the TIP.

- Transportation System Management Subcommittee (TSM)
- Technical Advisory Committee (TAC)
- ***A thirty day Public Review and Comment period takes place before the TIP is presented to the Genesee County Metropolitan Alliance for approval. During this time, the public reviews and comments on the proposed projects.***
- Genesee County Metropolitan Alliance (Metro)

Once Metro has approved the TIP, the Michigan Department of Transportation (MDOT), Federal planning partners (Federal Highway Administration (FHWA) and Federal Transit Administration (FTA)) review and approve the Genesee County TIP and projects can begin!

“So, How Does A Project Happen?”

Citizens have ideas! These might include:

- Walking paths
- Smooth, safe roads
- Public transit



Citizens take their ideas to:

- City or Village Council
- Genesee County Road Commission
- MTA
- MDOT



GCMPC announces a “Call For Projects”:

- Road agencies and MTA submit projects
- Data is reviewed
- Costs are estimated
- Alternatives are evaluated
- Public opinion is considered



Projects are Considered:

- Reviewed and evaluated
- “Snapshot” of projects developed
- Public Comments for 30 days
- Comments/Responses are included in the TIP



Ideas become Realities:

- Projects are approved
- Projects are funded
- Projects are constructed



A Completed Project!

Transportation Improvement Program (TIP) Projects:

At any one time there are approximately 100 projects in the Transportation Improvement Program (TIP). Quarterly, the status of each project is reported to the GCMPC by State and Local road agencies, the Mass Transportation Authority (MTA) and Specialized Services transit providers. Staff reviews and monitors projects' progress and compiles a report for the Technical Advisory Committee (TAC) and the Genesee County Metropolitan Alliance (METRO).

The following table provides a sample of projects that were completed over the last few years in Genesee County.

Center For Gerontology			
Project:	Description:	Total \$:	Federal \$:
Specialized Services	One Replacement Vehicle	\$57,400	\$45,900
Genesee Association for Retarded Citizens (GCARC)			
Specialized Services	Two, 29 foot, Med. Duty Buses	\$165,160	\$132,120
City of Fenton			
Main St. - Walnut to Eddy Lake Rd.	Widen from 2 to 3 lanes	\$1,415,616	\$1,132,493
City of Flint			
M.L. King, Jr. Blvd. - 2nd Ave. to Welch Blvd.	Reconstruction	\$750,000	\$600,000
City of Grand Blanc			
Genesee Rd. - Perry Rd. to 1600 Ft. North	Widen from 2 to 3 lanes	\$715,000	\$572,000
City of Linden			
W. Broad St. - Bridge St. to W. City limits	Reconstruction	\$1,941,170	\$1,354,402

City of Montrose

Project:	Description:	Total \$:	Federal \$:
Saginaw St. - M-57 to Hickory	Reconstruction	\$528,105	\$432,254

City of Mt. Morris

Walter St - E. Mt Morris Rd. to North St.	Mill and Resurface	\$146,000	\$116,848
---	--------------------	-----------	-----------

City of Swartz Creek

Miller Rd. - Seymour Rd. to First St.	Restripe from 4 to 3 lanes, Bicycle lanes	\$744,283	\$595,426
---------------------------------------	---	-----------	-----------

Genesee County Metropolitan Planning Commission (GCMPC)

RIDESHARE Program	Commuter Carpool and Vanpool	\$65,600	\$32,800
-------------------	------------------------------	----------	----------

Genesee County Road Commission (GCRC)

Beecher Rd - Linden Rd. to Jennings Rd.	Mill and Resurface	\$460,000	\$368,000
Burpee Road Bridge	Bridge Replacement	\$465,000	\$441,752
Grand Blanc Rd. - Grand Blanc City limits to Bicentennial Park	Construct Multi-Use Pathway	\$220,000	\$110,000

Mass Transportation Authority (MTA)

Transit	Bus Rolling Stock	\$3,479,250	\$2,783,400
Project Zero Regional Transportation	Project Zero Regional Transportation	\$2,245,356	\$500,000

Michigan Department of Transportation (MDOT)

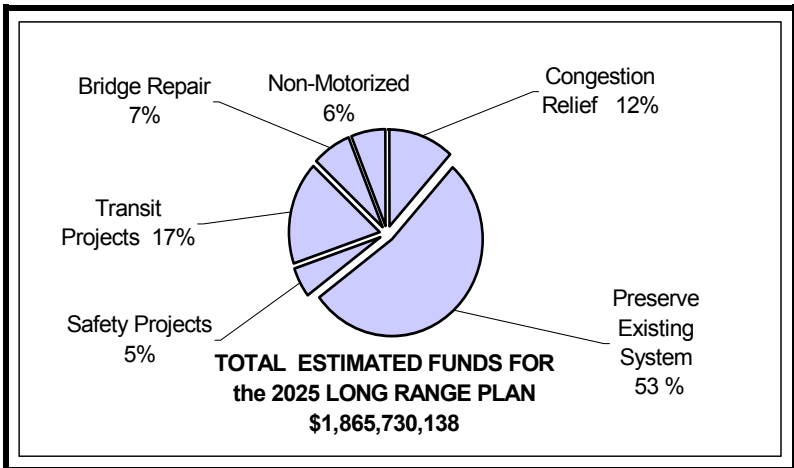
I-75 - I-475 to M-57	Reconstruct to 4 lanes each direction	\$36,702,799	\$33,032,519
M-54 - Bristol Rd. to Hemphill Rd	Widen from 4 to 5 lanes	\$1,939,000	\$1,587,072
I-75, US-23, & M-54 - Seven Bridges	New superstructure, concrete overlays	\$5,659,550	\$4,527,640

“Where Does the Money Go?” - Planning Within Our Means

- Everyone has a “wish list”. Through the most recent (2025) Long Range Planning process, GCMPC has identified over **\$1.8 Billion** of transportation system needs. That means an average of over **\$74 million** is needed each year. The gap between needs and resources means many projects must be postponed or alternative funding must be sought.
- The gap between money and needs also means that most of the projects selected for funding in the LRP and the TIP will be those designed to maintain and preserve the current system, rather than expand it.
- The Federal government pays for approximately 80% of a transportation project and the local community or road agency must pay the rest.

There are 19 Categories of Federal funds that make up the total dollar amount that Genesee County will use on eligible projects. These categories include monies to improve road surfaces, purchase public transit vehicles and to operate their system as well as money for bridges, safety, enhancement and high priority projects.

The amount of revenues that will be needed are forecasted for the 25 years of the LRP. Of the **\$1,865,730,138** total funds estimated, the following diagram indicates how it will be spent over the 25-year period.



**Based on individual project specifics, “Safety” funds may be utilized for projects within the above categories.*

“How Can I Make A Difference?”

- **Take your ideas to the right place!**

Find out who “owns” the road. Many citizens do not realize that each road has a road agency that is responsible for that road. “Owners” in Genesee County include the Road Commission, MDOT, and local Cities and Villages. In addition, the MTA is the agency that is responsible for providing public transit services.

- **Be active early on!**

Don't wait! Start Now!!

- **Attend Public Workshops and Hearings!**

These events always take place before a project is started. Find out where your Community's Council and Board Meetings are held. The Genesee County Metropolitan Alliance regularly meets each month, usually on the third Wednesday at 7:30 p.m. This committee always has time to listen to your concerns!

Where: Genesee County Administration Building
1101 Beach Street in Downtown Flint (Location Map)
On the Third floor in the Harris Auditorium.

Contact GCMPC for meeting dates and further information by:

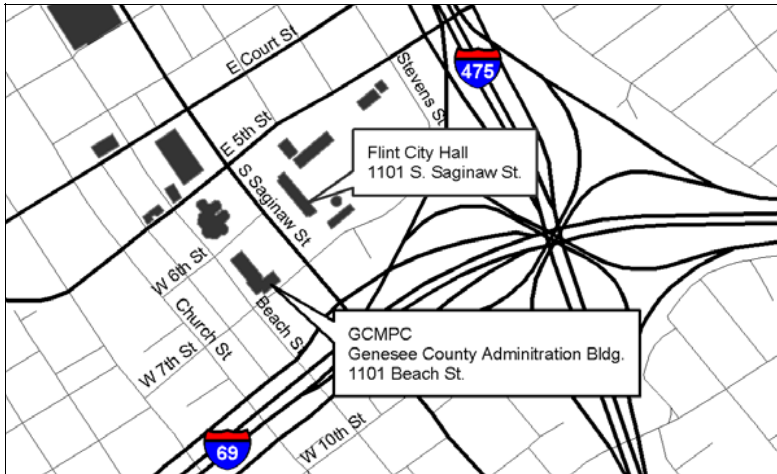
Telephone: 810-257-3010

Visit our website at: <http://www.gcmpc.org>

Address: 1101 Beach Street, Room 223

Flint, MI 48502-1470

Michigan Relay Center: Dial 711 or 1-800-649-3777



Resources:

Genesee County Road Commission (GCRC)

Telephone: 810-767-4920

Fax: 810-767-5373

Website: <http://www.gcrc.org>

Address: 211 W. Oakley Street

Flint, MI 48503

Mass Transportation Authority (MTA)

Customer Service: 810 767-0100

Routes & Schedules: 810 767-0100

Your Ride Service: 810 767-0780

Telecommunications Device For the Deaf (TDD): 810- 767-2595

Address: 1401 South Dort Highway

Flint, MI 48503

Michigan Department of Transportation (MDOT)

Davison Transportation Service Center

Telephone: 810-653-7470

Fax: 810-653-1248

Website: <http://www.mdot.state.mi.us>

Federal Highway Administration (FHWA)

Michigan Division

Telephone: 517-377-1844

Website: <http://www.fhwa.dot.gov>

Address: 315 W. Allegan

Lansing, MI 48933

Federal Transit Administration (FTA)

Region V Office

200 West Adams Street, Suite 320

Chicago, Illinois

Telephone: 312-886-1616

Website: <http://www.fta.dot.gov>

City of Burton

Telephone: 810-743-1500

Address: 4303 S. Center Rd.

Burton, MI 48519

City of Clio

Telephone: 810-686-5850

Address: 505 W. Vienna Rd.

Clio, MI 48420

City of Davison

Telephone: 810-653-2191

Address: 200 E. Flint St.

Davison, MI 48423

City of Fenton

Telephone: 810-629-2261

Address: 301 S. Leroy St.

Fenton, MI 48430

City of Flint

Telephone: 810-766-7165

Address: 1101 S. Saginaw St.

Flint, MI 48502

City of Flushing

Telephone: 810-659-5665

Address: 309 E. Main St.

Flushing, MI 48433

City of Grand Blanc

Telephone: 810-694-1118

Address: 203 E. Grand Blanc Rd.

Grand Blanc, MI 48439

City of Linden

Telephone: 810-735-7980

Address: 132 East Broad St.

Linden, MI 48451

City of Montrose

Telephone: 810-639-6168

Address: 141 Parkway

Montrose, MI 48457

City of Mt. Morris

Tel: 810-686-2160

Address: 1649 N Saginaw St.

Mt. Morris, MI 48458

City of Swartz Creek

Tel: 810-635-4464

Address: 8083 Civic Dr.

Swartz Creek, MI 48473

Village of Gaines

Telephone: 989-271-8386

Address: 113 Genesee St.

Gaines, MI 48436

Village of Goodrich

Telephone: 810-659-5665

Address: 10242 Hegel Rd.

Goodrich, MI 48436

Village of Lennon

Telephone: 810-621-4285

11904 Lennon Rd.

Lennon, MI 48449

Village of Otisville

Telephone: 810-631-4680

Address: 300 East St.

Otisville, MI 48463

Village of Otter Lake

Telephone: 810-793-2665

5902 Genesee St.

Otter Lake, MI 48464

Glossary of Transportation Acronyms and Terms

- 3-C** Continuing, Comprehensive and Cooperative Planning Process between Planning Partners.
- ADA** Americans with Disabilities Act
- CAA** Clean Air Act identifies actions that States and MPOs must take to reduce pollution from on road vehicles
- CMS** Congestion Management System is the approach to manage performance of the transportation system.
- Demographics** Numbers that describe populations: of people, vehicles, households, etc. that are used extensively in the Transportation Planning process.
- Environmental Justice** Ensures that federally funded transportation benefits are fairly and equitably distributed to avoid discrimination to any person or group.
- FHWA** Federal Highway Administration
- Fiscal Constraint** Making sure that a given project or program can reasonably expect to receive funding within the time allotted, i.e. "Financially Responsible".
- FTA** Federal Transit Administration
- FY** Fiscal Year is a budgetary "year" in the Federal accounting system that begins October 1 and ends September 30 of each year.
- Intermodal** Refers to the many ways people travel, (Car, Bus, Bicycle, Rail, Walking, etc).
- ITS** Intelligent Transportation System is the application of advanced technologies to improve efficiency and safety of transportation systems.
- LRP** Long Range Transportation Plan is a document developed from area wide consensus which lists twenty years of projects scheduled for federal funding.
- Land Use** Refers to the manner in which portions of land or the structures on them are used. Commercial, residential, industrial, and mobile home data is used in transportation planning.
- Genesee County Metropolitan Alliance** The Planning and Policy committee that addresses issues of federally funded transportation programs in Genesee County.
- MPO** Metropolitan Planning Organization such as the Genesee County Metropolitan Alliance
- MSA** Metropolitan Statistical Area is designated by U.S. Census Bureau for populous areas
- MTA** The primary Public Transit agency that provides services to customers traveling within, as well as regional transit travelers working out of this area.
- NEPA** National Environmental Policy Act of 1969
- PE** Preliminary Engineering takes place during project development stages.
- PMS** Pavement Management System is a method for determining physical condition of roads.
- Public Participation** The active and meaningful involvement of public in the development of transportation plans and programs.
- SLRP** **State Long Range Plan** which combines all regional LRP's.
- SMS** **Safety Management System** a method for analyzing accidents to better address transportation safety issues and projects.
- STIP** **State Transportation Improvement Program** is a document that combines all transportation projects that receive federal funds in Michigan.
- TAC** **Technical Advisory Committee** provides technical guidance to GCMPC and makes recommendations to the Metropolitan Alliance on transportation projects.
- TEA-21** **Transportation Efficiency Act for the 21st Century** is the guiding Federal legislation designating funds for Surface Transportation Programs and projects. This legislation authorizes federal funding for transportation investments for Fiscal Years (FY) 1998-2003.
- Title VI** Civil Rights Act of 1964 prohibits discrimination in any program receiving federal funds.
- TIP** **Transportation Improvement Program** is a multi year document prepared by MPOs that lists projects funded with FHWA/FTA funds.
- TSM** **Technical System Management Subcommittee** meets to discuss specific issues prior to making recommendations to the TAC and Metropolitan Alliance.
- UWP** **Unified Work Program** is the management plan for GCMPC transportation staff.
- Urbanized Area** An area with a city of 50,000 or more population, plus surrounding areas meeting size or density criteria, as defined by the U.S. Bureau of the Census.